

Chanate/Mendocino Area Sewer Replacement Project

Construction Expected to Begin Fall 2020



Project Benefits:

- Reduce the potential for sewer overflows and protect Paulin Creek and its habitat
- Provide improved and safer access for routine inspection and maintenance
- Improve water pressure and flows
- Ensure your homes and businesses can depend on a safe, reliable sewer system

How do I learn more and stay informed?

For information about this project, and to sign up for weekly emails, ensuring you are getting up-to-date information about what's happening, visit the Project web page at ChanateSewerProject.com

If you have questions or concerns, please call the Project hotline at 707-385-1239.

Upgraded, More Dependable Sewer and Water Service for the Chanate/Mendocino Area

What is the project?

Major construction is going to begin this fall on the North Trunk Sewer Main, a pipeline which collects sewer flows from homes and businesses in the area of Chanate Road and Mendocino Avenue. Years in the planning, this project will upgrade and improve performance of the collection system by replacing and/or relocating sections of aging or inaccessible sewer pipelines, as well as older, undersized water pipelines.

Schedule

Work is expected to begin in fall 2020 and continue for two years. Please note that this schedule may change in the event of Public Safety Power Shutoffs, extended severe weather conditions, or other circumstances outside the control of the City.

Where will construction take place?

In general, work will take place on portions of the following streets or intersections: Chanate Road, Mendocino Avenue, Plum Drive, Lomitas Avenue, Lomitas Lane, Strawberry Drive; and certain easements not in roadways (see map).

What are the hours of construction?

Most work sites:

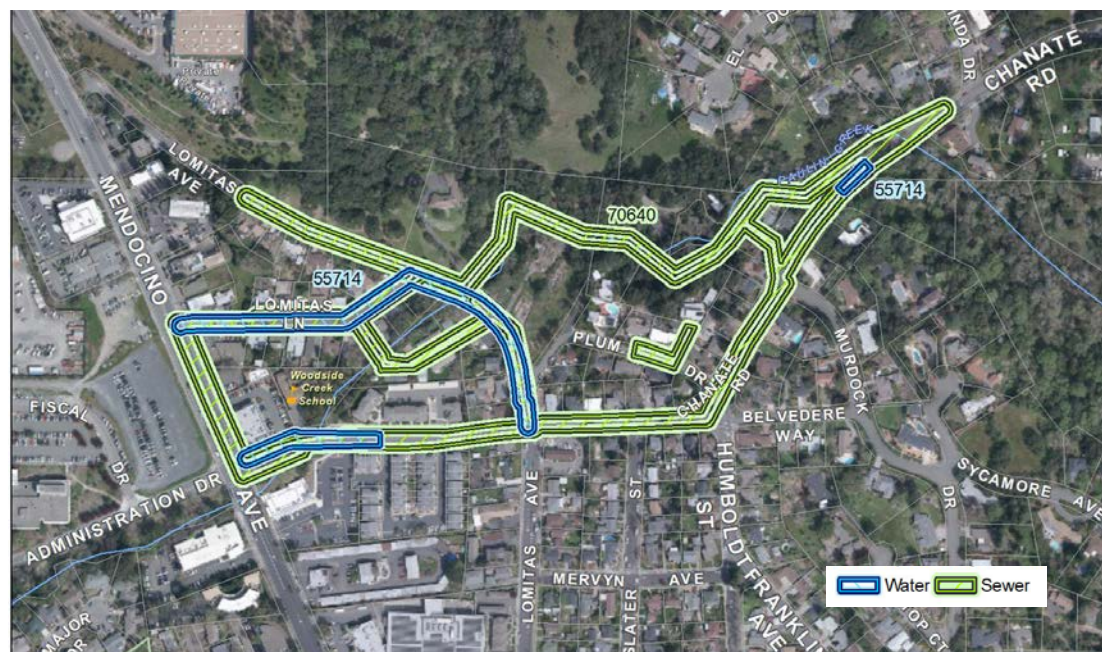
7 AM to 7 PM Monday through Friday.

Periodic weekend/night work:

On a limited, pre-approved basis; residents will be notified in advance.

Mendocino Avenue:

10 PM to 6 AM (overnight) to minimize traffic disruptions and impacts to local businesses. Access to businesses will be maintained throughout the project.





How will construction impact the neighborhood?

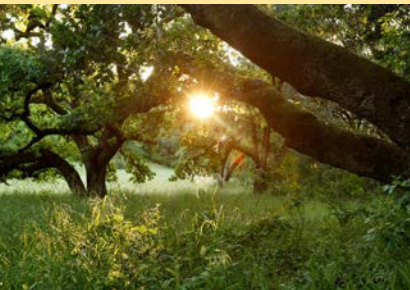
As with any large construction project, there will be unavoidable noise, dust, traffic delays, and changes in on-street parking availability. We apologize for these inconveniences. Once construction ends, homes and businesses in the area will have an improved, more reliable, efficient, and durable sewer and water infrastructure.



Along Chanate Road, where trench depths will be up to 35 feet deep, we'll be using "trenchless technology" for the installation of the new sewer line. This means less excavation and fewer trenches in that area. The diagram above illustrates one type of trenchless pipeline replacement that will be used on the project.

Environmental Protection

Many of the sewer pipelines in this area are very old — in fact some are clay pipes that have reached the end of their useful life. These older pipes can be subject to cracks and blockages, resulting in possible storm water leakage into the sewer system, and potential overflows. Sewer pipeline failures can cause significant damage to the environment, especially when near a natural creek or waterway — as is the case with some of the pipelines being replaced or relocated in this project. By replacing these and other aging sewer pipelines, we are taking a giant leap forward in protecting the riparian habitat of Paulin Creek, and the areas around homes and properties in the affected neighborhoods.



Protecting Paulin Creek and its habitat.

You can be assured that the City's environmental/biological staff will be on-site whenever this construction is taking place within the Paulin Creek area, as well as when excavations take place in other areas of concern, to ensure the work is carefully carried out in a manner which protects the environment. All work in sensitive habitats will be conducted in strict compliance with California Department of Fish and Wildlife requirements.

Parking/Traffic Control Plan

An extensive traffic control plan will help minimize traffic disruptions during this work, taking into account the potential for wildfire, other emergency, or public safety power shutoffs. This plan includes electronic message boards strategically located and regularly updated to let motorists know of construction and traffic control changes.

There will be periodic on-street parking restrictions in various areas. The City will work with individuals requiring accessibility accommodations for their parking needs. Access to residences will be maintained. However, there may be times when paving or trench work will temporarily limit access.

Trash collection trucks will be accommodated to continue service to the neighborhood during construction. If needed, collection containers will be moved by the contractor to allow garbage trucks to make collections, then returned to the property. Mail, package delivery, and bus service are expected to be maintained.